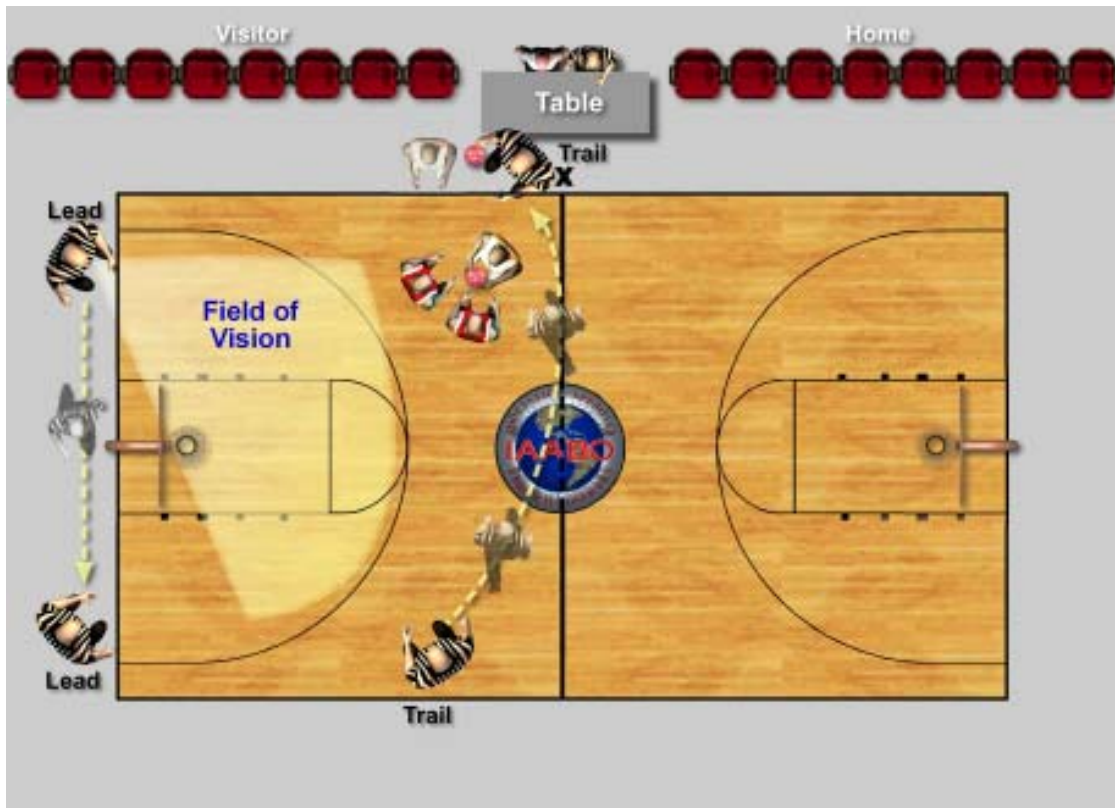


# IAABO E - Court

## THROW-IN FRONT COURT SIDELINE BELOW FREE THROW LINE EXTENDED

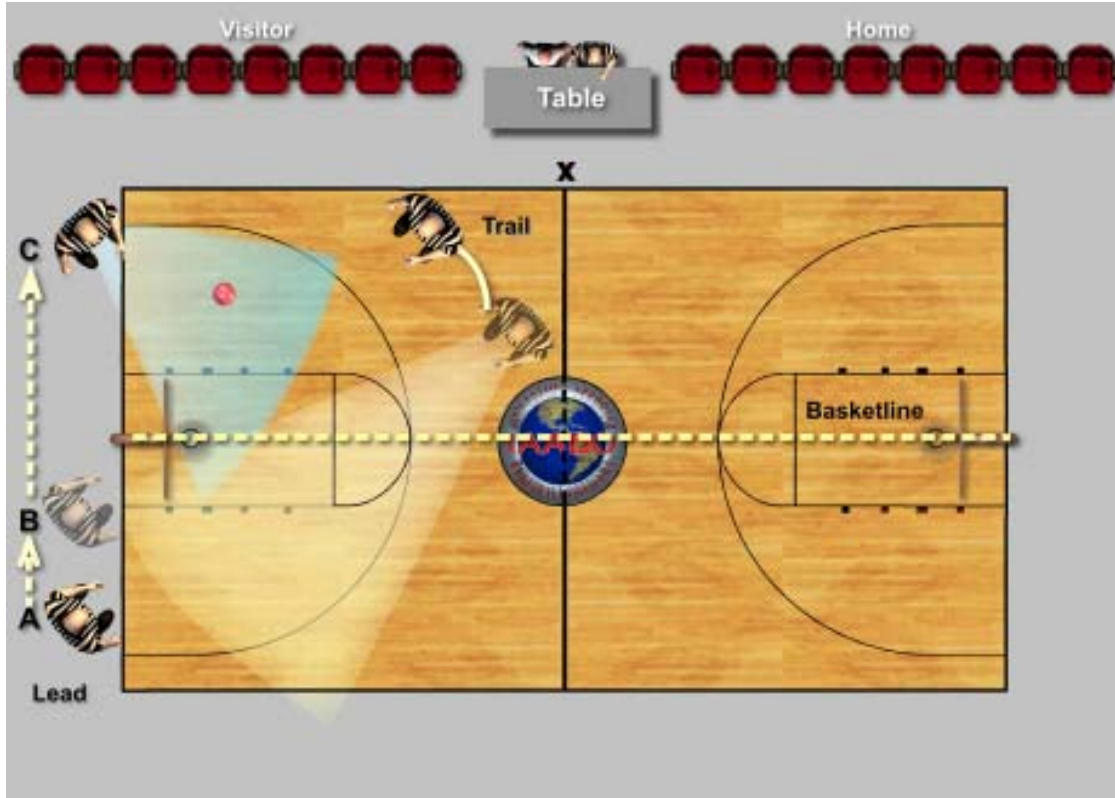
*The lead official may administer a sideline throw-in when the designated spot is below the free throw line extended. The lead official shall remain on the endl ine and shall bounce the ball to the thrower (the lead must be cautious when the throw-in is in a congested area). This will prevent the mishandling of the ball by the thrower-in.*



## THROW-IN FRONT COURT SIDELINE ABOVE FREE THROW LINE EXTENDED

*Ball is settled in frontcourt near the farther sideline in trail's primary coverage area, where pressure is applied and the player with ball is trapped. The trail officials moves toward the farther sideline while the lead officials is focused on post play. Lead may stay ballside or move across basketline dependent upon needed coverage. If the ball goes out of bounds in this particular play situation, the trail shall administer throw-in.*

# I A A B O E - C o u r t



## **REBOUND COVERAGE—LEAD OFFICIAL BALLSIDE**

*When both officials are positioned on the same side of the basket line during a try for goal, the trail official shall read the action and focus on the weakside/across the basket line. The trail official is in the best position to officiate weakside rebounding, putbacks, and “over the back” pushing fouls. The lead official shall focus on the strong side of the basket line for strong side rebounding, putbacks, and “over the back” pushing fouls.*